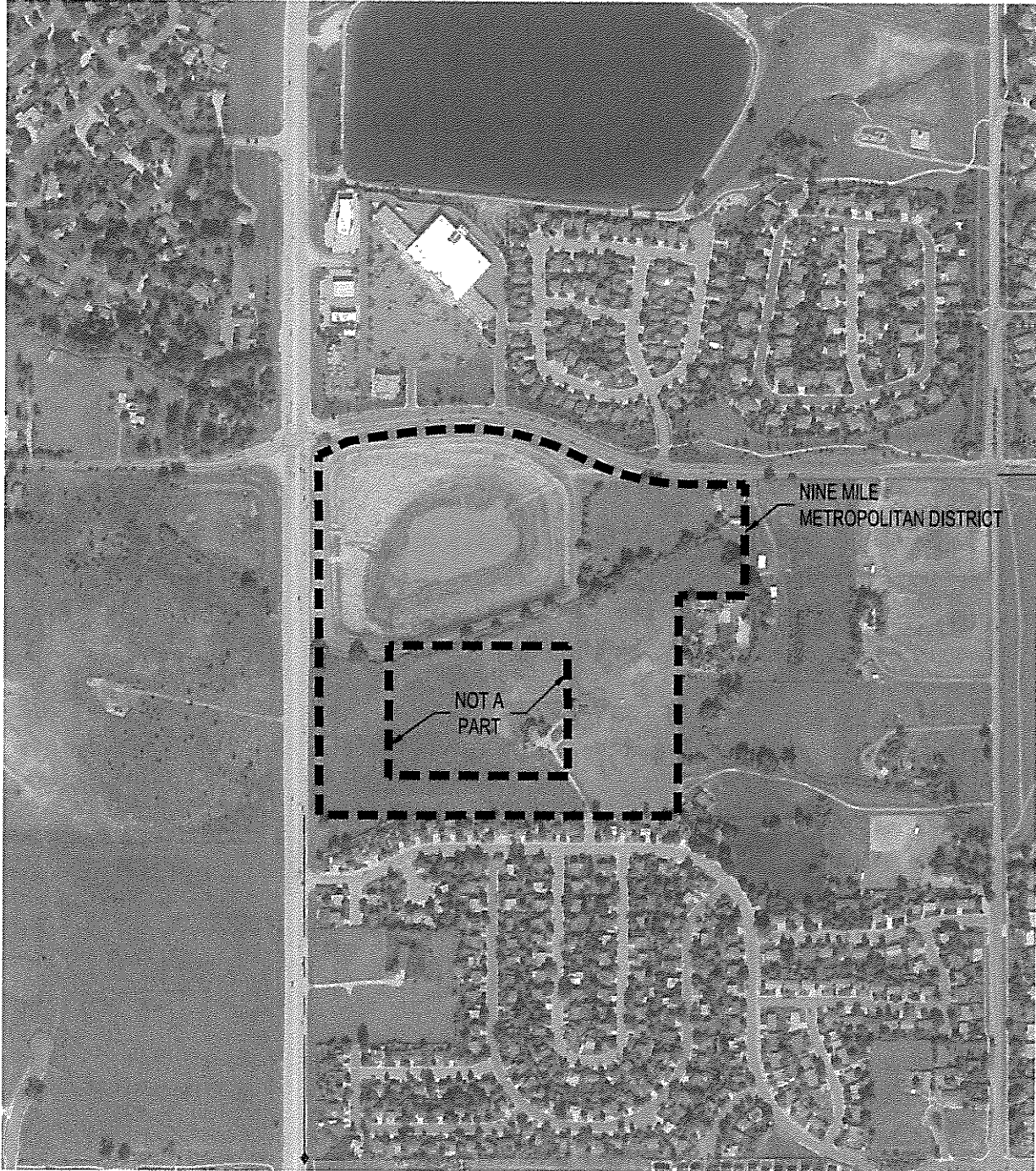


RECEIVED

SEP 03 2019

Div of Local Government

INITIAL DISTRICT BOUNDARY MAP



Nine Mile Metropolitan District

RECEIVED

SEP 03 2019

Div of Local Government

EXHIBIT "A-1"**INITIAL DISTRICT BOUNDARY
LEGAL DESCRIPTION****PROPERTY DESCRIPTION:**

LOT 1 AND TRACT A OF NINE MILE FILING NO. 1, BEING SITUATED IN BOTH THE NORTHEAST QUARTER OF SECTION 34 AND THE SOUTHEAST QUARTER OF SECTION 27, TOWNSHIP 1 NORTH, RANGE 69 WEST OF THE 6TH PRINCIPAL MERIDIAN, TOWN OF ERIE, COUNTY OF BOULDER, STATE OF COLORADO, BEING MORE PARTICULARLY DESCRIBED AS FOLLOWS:

BASIS OF BEARINGS:

BEARINGS ARE BASED ON THE NORTH LINE OF THE NORTHEAST QUARTER OF SECTION 34, BEING MONUMENTED ON THE WEST BY A FOUND 2.5" ALUMINUM CAP STAMPED "PLS 29752" IN A RANGE BOX FOR THE NORTH QUARTER CORNER AND ON THE EAST END BY A FOUND 2.5" ALUMINUM CAP STAMPED "PLS 12405" FOR THE NORTHEAST SECTION CORNER, AND IS CONSIDERED TO BEAR S89°58'01"E.

COMMENCING AT THE NORTH QUARTER CORNER FOR SECTION 34, THENCE N42°41'52"E, A DISTANCE OF 82.30 FEET TO THE **POINT OF BEGINNING**:

THENCE N64°30'37"E, A DISTANCE OF 126.60 FEET;

THENCE N81°07'46"E, A DISTANCE OF 158.08 FEET TO A POINT OF CURVATURE;

THENCE ALONG SAID CURVE TO THE RIGHT, HAVING A RADIUS OF 2000.00 FEET, A CENTRAL ANGLE OF 05°37'00", A DISTANCE OF 196.06 FEET, A CHORD BEARING OF N83°56'16"E WITH A CHORD DISTANCE OF 195.98 FEET;

THENCE N86°44'46"E, A DISTANCE OF 59.37 FEET TO A POINT OF CURVATURE;

THENCE ALONG SAID CURVE TO THE RIGHT, HAVING A RADIUS OF 875.00 FEET, A CENTRAL ANGLE OF 27°12'59", A DISTANCE OF 415.64 FEET, A CHORD BEARING OF S79°38'44"E WITH A CHORD DISTANCE OF 411.74 FEET;

THENCE S66°02'15"E, A DISTANCE OF 136.54 FEET TO A POINT OF CURVATURE;

THENCE ALONG SAID CURVE TO THE LEFT, HAVING A RADIUS OF 910.00 FEET, A CENTRAL ANGLE OF 23°54'44", A DISTANCE OF 379.78 FEET, A CHORD BEARING OF S77°59'37"E WITH A CHORD DISTANCE OF 377.03 FEET;

THENCE S89°56'58"E, A DISTANCE OF 215.32 FEET;
THENCE S00°01'26"E, A DISTANCE OF 426.10 FEET;
THENCE N89°58'23"W, A DISTANCE OF 252.20 FEET;
THENCE S00°00'29"E, A DISTANCE OF 846.36 FEET;
THENCE S89°54'51"W, A DISTANCE OF 1377.41 FEET;
THENCE N00°23'00"W, A DISTANCE OF 1379.59 FEET TO THE **POINT OF BEGINNING.**

PARCEL CONTAINS 2,057,961 SQUARE FEET OR 47.244 ACRES, MORE OR LESS.

LESS AND EXCEPT: A PORTION OF THE ABOVE DESCRIBED PROPERTY BEING MORE PARTICULARLY DESCRIBED AS FOLLOWS;

COMMENCING AT THE NORTH QUARTER CORNER FOR SECTION 34, THENCE S89°58'01"E, A DISTANCE OF 56.21 FEET TO THE NORTHWEST CORNER OF SAID TRACT A; THENCE ALONG THE WEST LINE OF SAID TRACT A S00°23'00"E, A DISTANCE OF 667.24 FEET; THENCE N90°00'00"E, A DISTANCE OF 269.18 FEET TO THE **POINT OF BEGINNING:**

THENCE N90°00'00"E, A DISTANCE OF 685.13 FEET;

THENCE S00°23'00"E, A DISTANCE OF 499.77 FEET;

THENCE N90°00'00"W, A DISTANCE OF 678.20 FEET TO A POINT OF CURVATURE;

THENCE ALONG SAID CURVE TO THE LEFT, HAVING A RADIUS OF 2.33 FEET, A CENTRAL ANGLE OF 28°08'02", A DISTANCE OF 1.15 FEET, A CHORD BEARING OF S75°55'59"W WITH A CHORD DISTANCE OF 1.13 FEET;

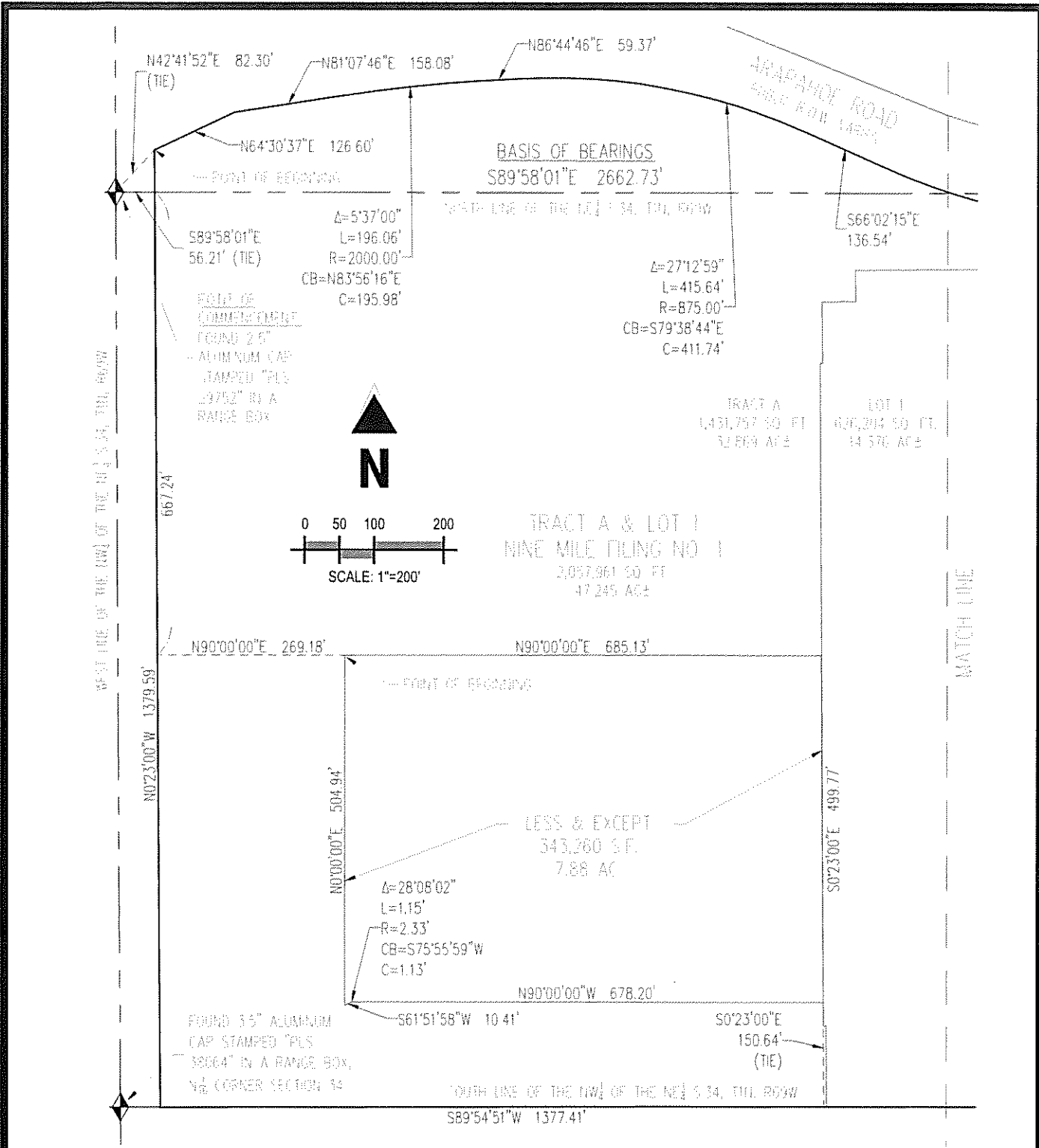
THENCE S61°51'58"W, A DISTANCE OF 10.41 FEET;

THENCE N00°00'00"E, A DISTANCE OF 504.94 FEET TO THE **POINT OF BEGINNING.**

LESS AND EXCEPT PORTION CONTAINS 343,260 SQUARE FEET OR 7.880 ACRES, MORE OR LESS.

TRACT A AND LOT 1 LESS AND EXCEPT PORTION CONTAINS 1,714,701 SQUARE FEET OR 39.36 ACRES, MORE OR LESS.

PREPARED FOR AND ON BEHALF OF GALLOWAY & COMPANY, INC.
BY: BRIAN J. DENNIS, PLS 38069
PROJECT #: EDI000018.11

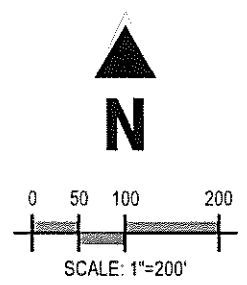
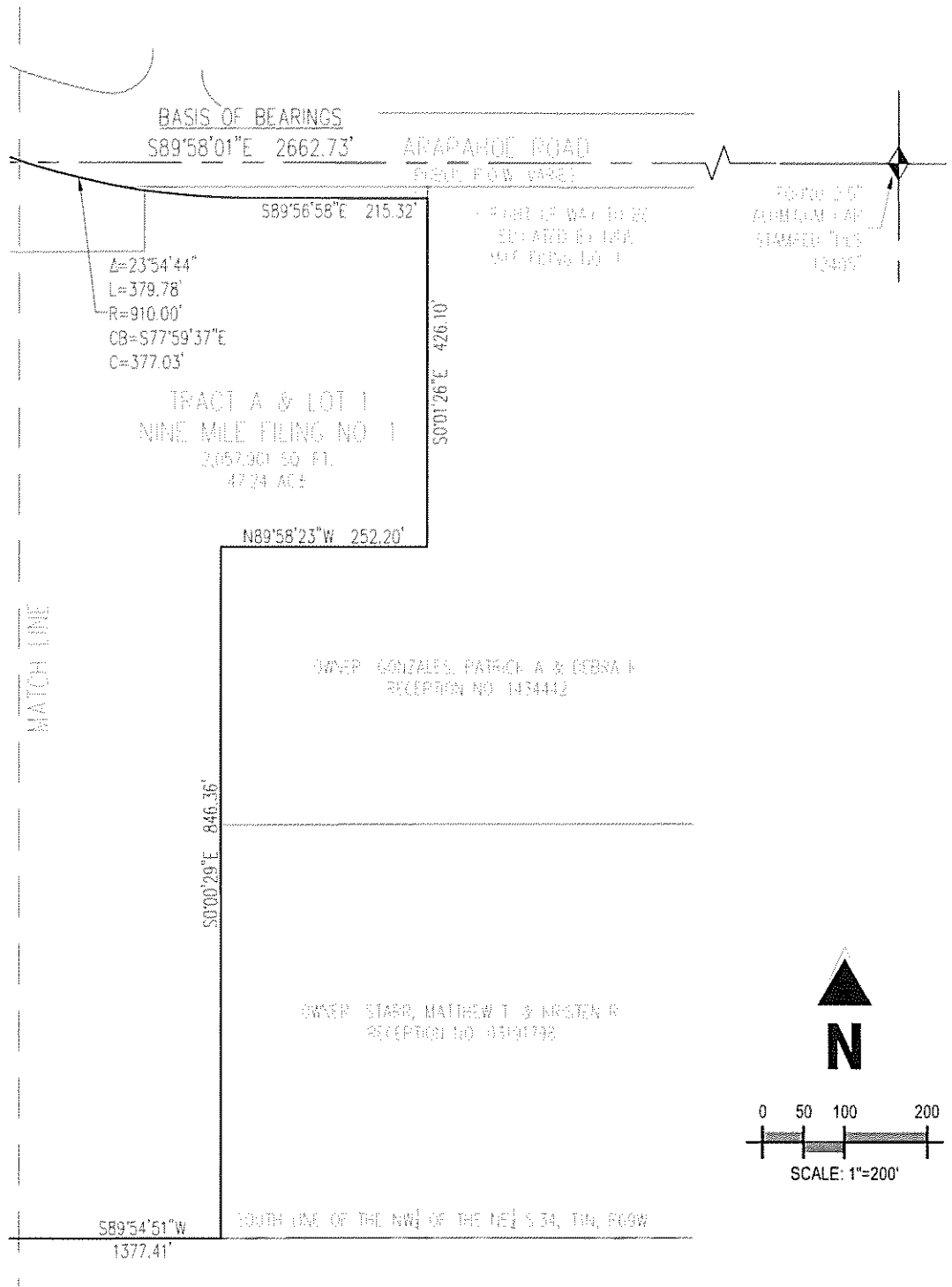


NOTE: THIS ILLUSTRATION DOES NOT REPRESENT A MONUMENTED SURVEY. IT IS INTENDED ONLY TO DEPICT THE ATTACHED LEGAL DESCRIPTION.

EXHIBIT A-1
INITIAL DISTRICT BOUNDARY
 TOWN OF ERIE, COUNTY OF BOULDER, STATE OF COLORADO

Project No: EDI000018.10
 Drawn By: JGH
 Checked By: BJD
 Date: 8.1.19

Galloway
 1755 Telesat Drive, Suite 107
 Colorado Springs, CO 80920
 719.500.7200
 GallowayCS.com



NOTE: THIS ILLUSTRATION DOES NOT REPRESENT A MONUMENTED SURVEY. IT IS INTENDED ONLY TO DEPICT THE ATTACHED LEGAL DESCRIPTION.

EXHIBIT A-1
 INITIAL DISTRICT BOUNDARY
 TOWN OF ERIE, COUNTY OF BOULDER, STATE OF COLORADO

Project No: EDI000018.10
 Drawn By: JGH
 Checked By: BJD
 Date: 8.1.19

Galloway
 Surveyors & Engineers
 1765 Telesar Drive, Suite 107
 Colorado Springs, CO 80920
 719.901.7220
 GallowayS&E.com